



NEXT 12 Prestained Protein Ladder

22 JAN 2025

Catalog Number	Size	Range
PMX12-0500	500 μ l	11 to 250 kDa

Storage Conditions

Stable for up to 2 weeks at 25°C.

Stable for up to 3 months at 4°C.

Stable for up to 24 months at -20°C.

Description

The NEXT 12 Prestained Protein Ladder is a combination of 12 pre-stained proteins with molecular weights from 11 to 250 kDa. The 12 recombinant proteins are covalently coupled with a blue chromophore, while a red band at 80 kDa, a green band at 25 kDa, a newly designed yellow band at 15 kDa, and a purple band at 250 kDa serve as reference bands. The NEXT 12 Prestained Protein Ladder keeps track of the size and separation of proteins during SDS-polyacrylamide gel electrophoresis, approximating the target protein size and validating the Western transfer efficiency on PVDF, nylon, or nitrocellulose membranes.

Kit Content(s)

NEXT 12 Prestained Protein Ladder	500 μ l x 1 vial
-----------------------------------	----------------------

Storage Buffer

0.2~0.4 mg/ml of each band of protein is stored in a mixture of solution that contains: 20 mM Trisphosphate at pH 7.5, 2% SDS, 0.2 mM Dithiothreitol, 3.6 M Urea, and 15% (v/v) Glycerol.

Required materials but not provided

- Vertical Electrophoresis system
- Power supplies
- Vortex or equivalent
- Microcentrifuge

Reaction Setup

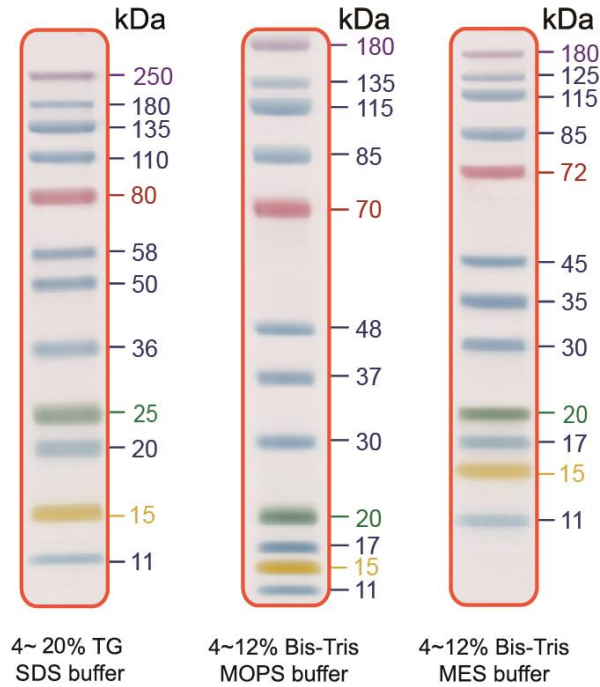
3 μ l or 5 μ l per loading for clear visualization during electrophoresis on 15-well or 10-well mini-gel, respectively. 2.5 μ l per well for general Western transferring.





Guide for Molecular Weight Estimation (kDa)

Refer to the NEXT 12 Prestained Protein Ladder patterns in various electrophoresis conditions:



Important notes

The molecular weight of each protein (kDa) was measured against an unstained protein ladder in every electrophoresis condition. Additional data should be considered for a more accurate adjustment.